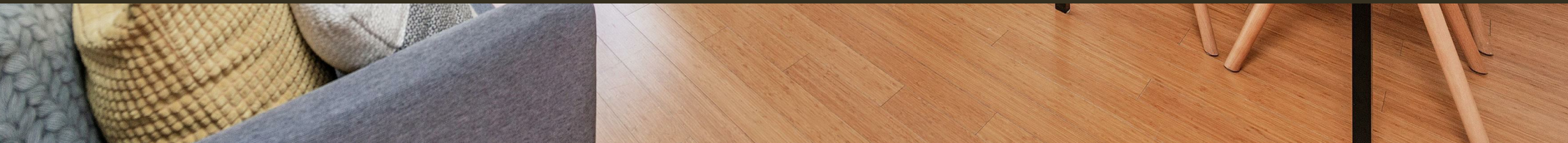




119 Newington Causeway, London
SE1

GARTONJONES.COM



119 Newington Causeway, London
, SE1

GARTON JONES.COM

9 Albert
Embankment
London
SE1 7SP

Lettings:
+44 (0) 20 7735 1888
nineelms@gartonjones.com
www.gartonjones.com

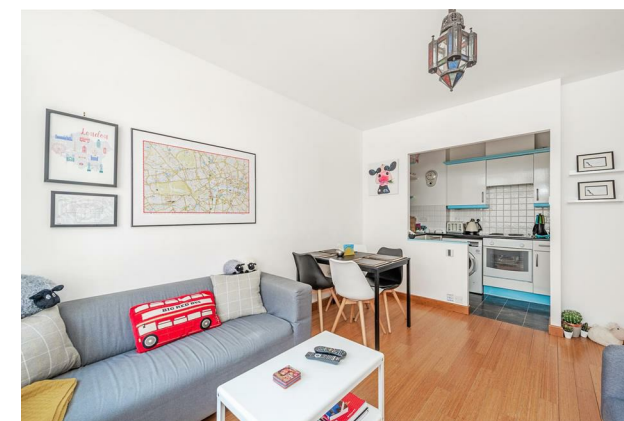
£550 Per Week

A bright and spacious 2 double bedroom, 2-bathroom (1 en-suite) apartment of 630sq.ft (58.5sq.m) available to rent in Metro Central Heights, a modern development situated moments from the tube links of Elephant & Castle. The property was recently renovated by the Owner including the installation of new-double glazed windows that were installed and is furnished to a good standard. The property further benefits from an open plan reception room, wood flooring throughout with underfloor heating, two double bedrooms, 2 bathrooms, great storage, a 24hr concierge and access to a leisure suite with swimming pool, gymnasium, and spa. The property is also overlooking the communal courtyards and offers peaceful living while being located next to Elephant & Castle station providing easy access into Central London.

Please note furniture may differ to that shown in the current photos.

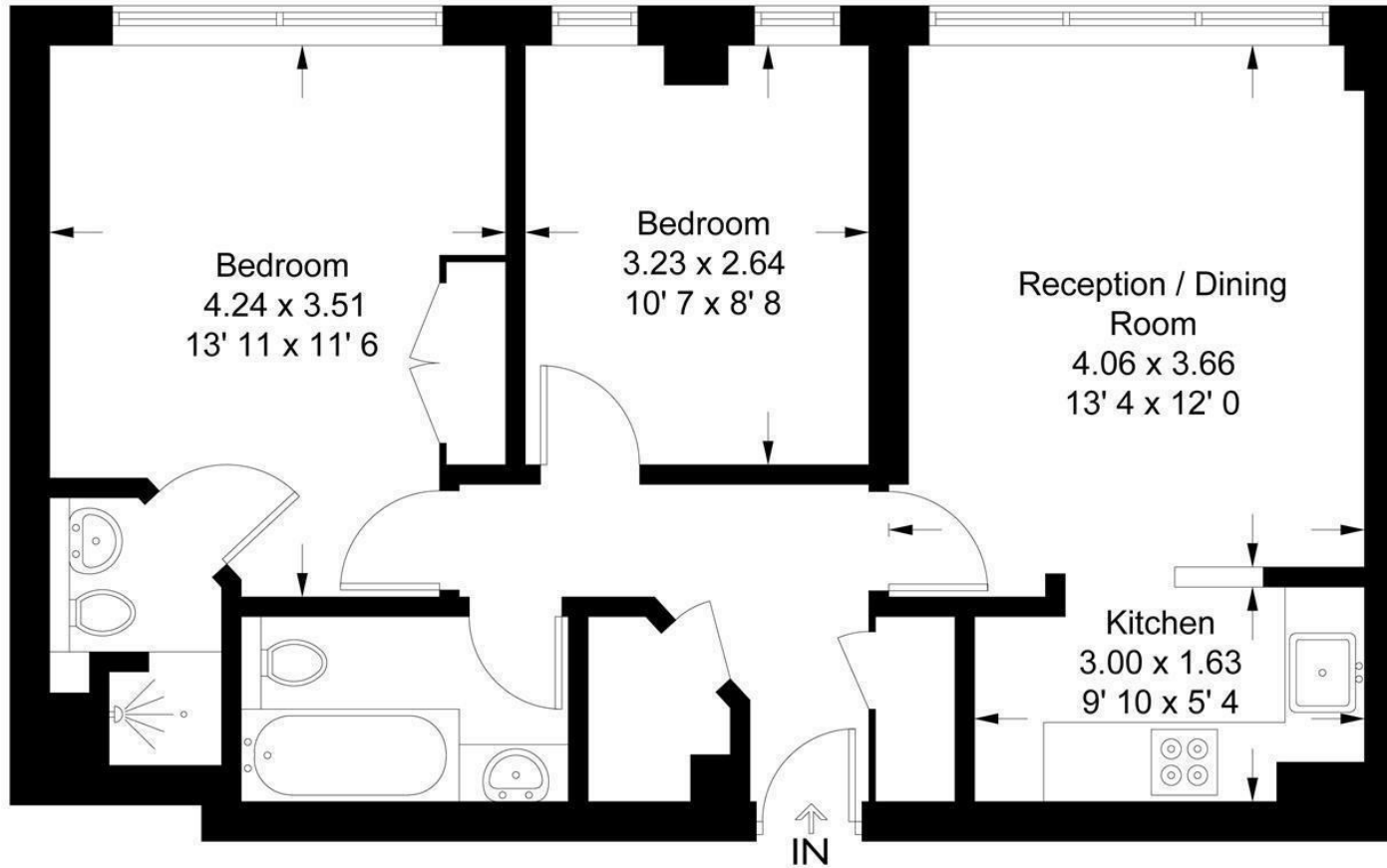
- Electricity Supply — Mains | Water Supply — Mains | Sewerage — Mains | Heating — Underfloor Heating
- Broadband & Mobile Signal: Check Coverage via Ofcom
- Parking: No Parking Included
- Lift Access
- Building Safety: EWS1 Available on Request
- Council Tax Band D (London Borough of Southwark)
- 12 Month Minimum Term
- 5 Week Security Deposit
- Holding Deposit equivalent to 1 week of rent
- Rent to be payable monthly in advance
- EPC Rating C (69)

- 2 Bedrooms
- 630sq.ft (58.5sq.m)
- 2 Bathrooms (1 En-Suite)
- Open-Plan Reception Room
- Quiet Courtyard Facing Aspect
- Wooden Flooring
- 24 Hour Concierge
- Residents Gym
- Swimming Pool
- 0.1 Miles to Elephant & Castle Station



Metro Central Heights

Approximate Gross Internal Area = 630 sq ft / 58.5 sq m



Not to scale, for guidance only and must not be relied upon as a statement of fact
All measurements and areas are approximate only and have been prepared in
accordance with the current edition of the RICS Code of Measuring Practice

